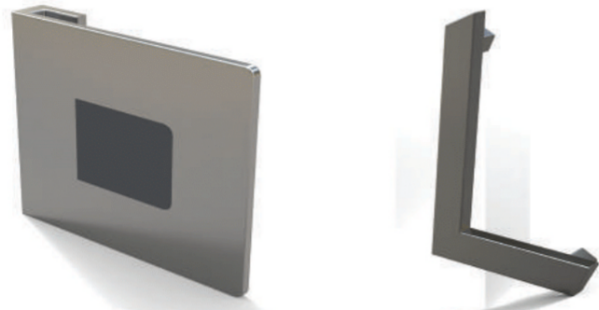




## EXTERNAL HANDLES

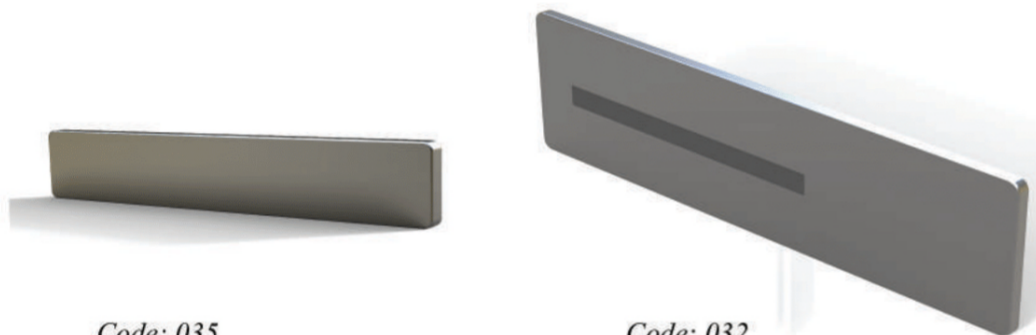
*Innovative design with attention to detail.*

*Every handle can be combined with any door design to make it one of a kind.*



Code: 033  
Square with a detail  
colored the same as the door.

Code: 030  
Angular handle



Code: 035  
Horizontal handle in multiple sizes

Code: 032  
Horizontal with a detail colored  
the same as the door



Code: 031  
Horizontal asymmetric handle

Code: 034  
Vertical handle in multiple sizes

## Mirrored glass



TINTED



SATIN PINK



BLUE



TRANSLUCENT



SATIN TRANSPARENT



TINTED SATIN



TURQUOISE



SATIN BLUE



SATIN TRANSLUCENT



AZZUR



PINK



YELLOW



DEEP BLUE



TRANSPARENT

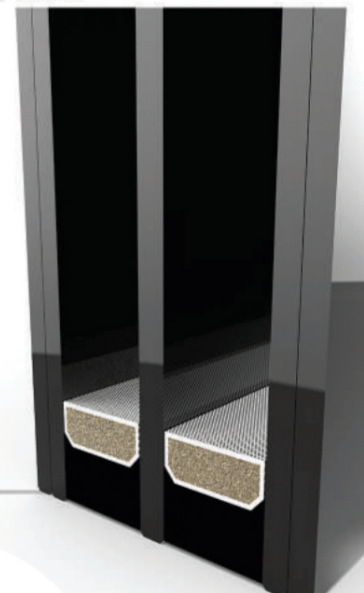


BLACK

*It's a high quality glass with a silver coating on one side, so that it can reflect more than 92% of the optical light.*

## Glass section

*The outer and inner glass are anti-vandal and the middle glass is energy efficient and comes in a variety of colors.*



## Sandblasted glass

*Sandblasted glass is built from a variety of glass and through processing, on one or both sides, it becomes rugged. It's color becomes milky and it's not see-through.*